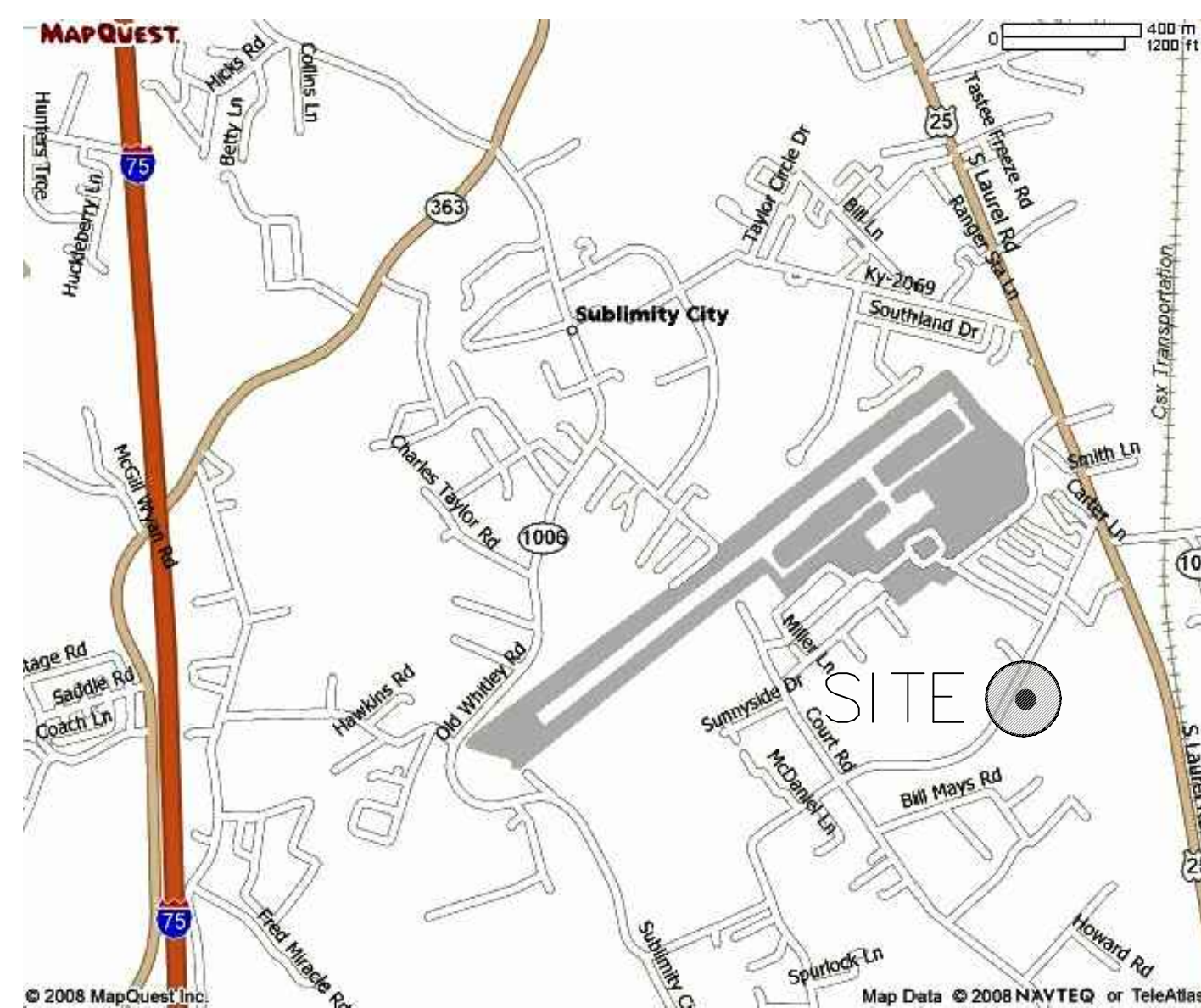


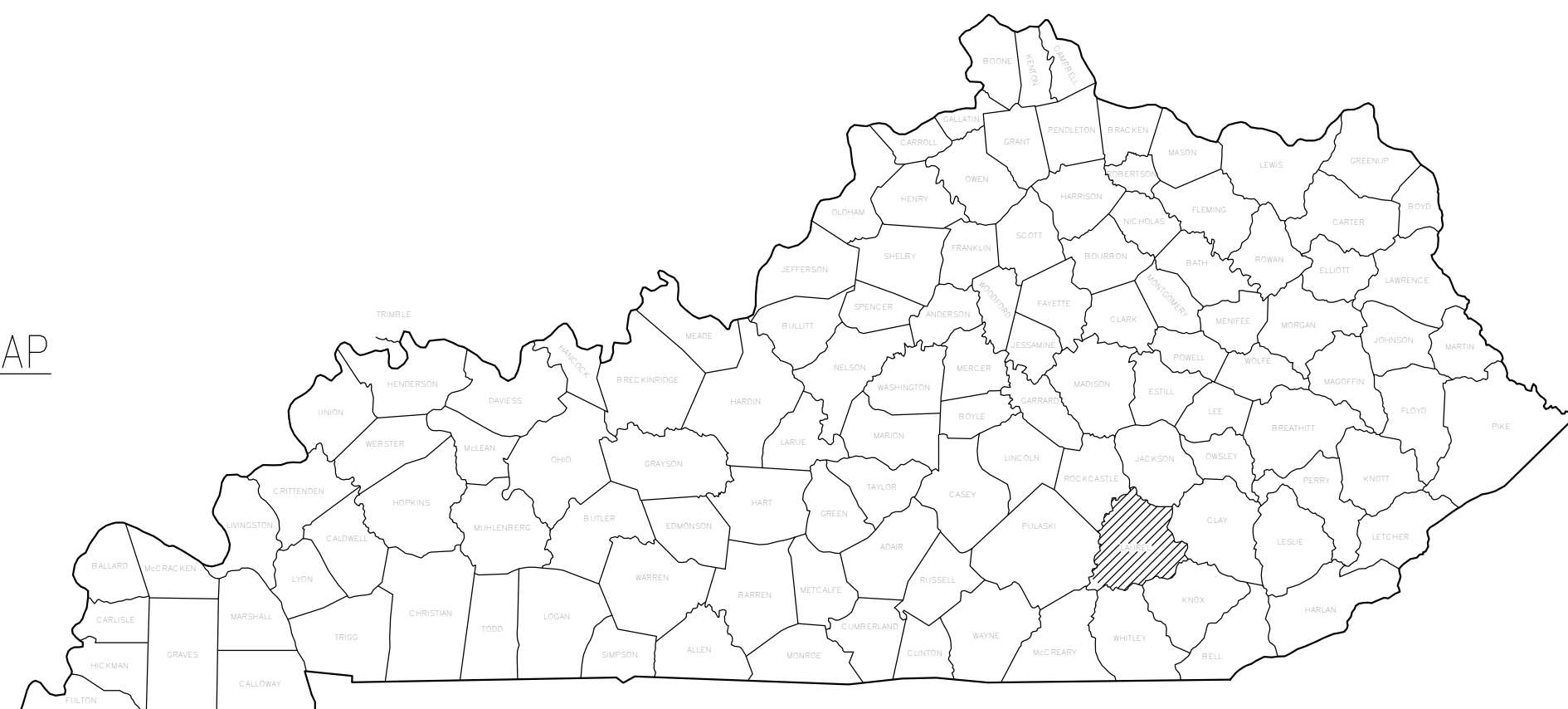
# GREER INDUSTRIAL PARK LOT 12 BUILD READY PAD CONSTRUCTION

## LONDON - LAUREL COUNTY INDUSTRIAL DEVELOPMENT AUTHORITY LAUREL COUNTY, KENTUCKY



**VICINITY MAP**  
NOT TO SCALE

LOCATION MAP



Sheet Titles	INDEX	Sheet Nos.
COVER		
EROSION CONTROL PLAN		C-1
GRADING PLAN		C-2
GENERAL NOTES		C-3

**nse** Engineers  
Architects  
Planners  
OF KENTUCKY, INC.

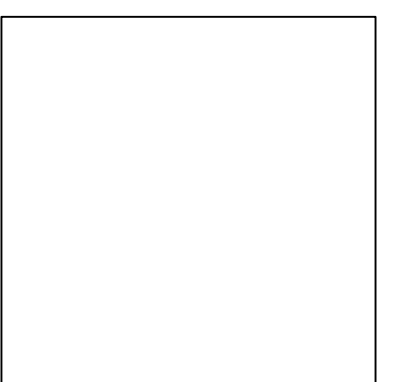
624 Wellington Way  
Lexington, KY 40503  
www.mselex.com

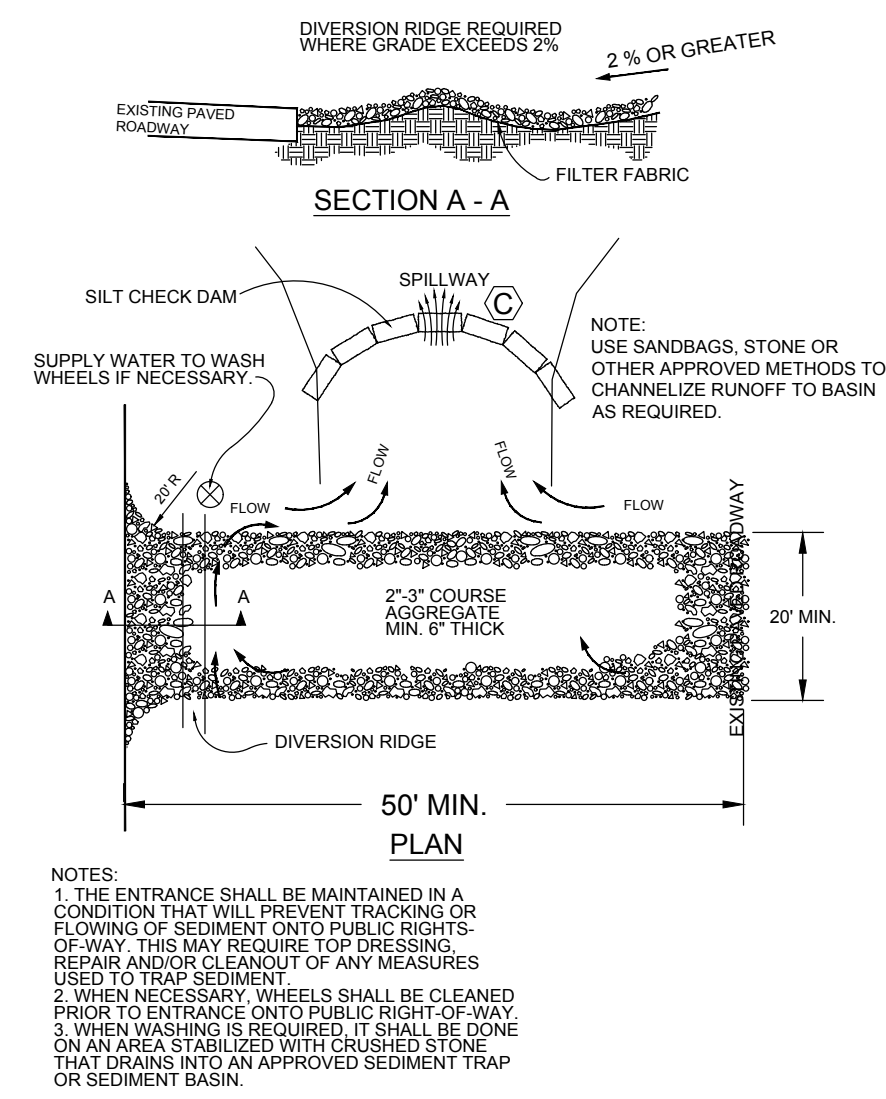
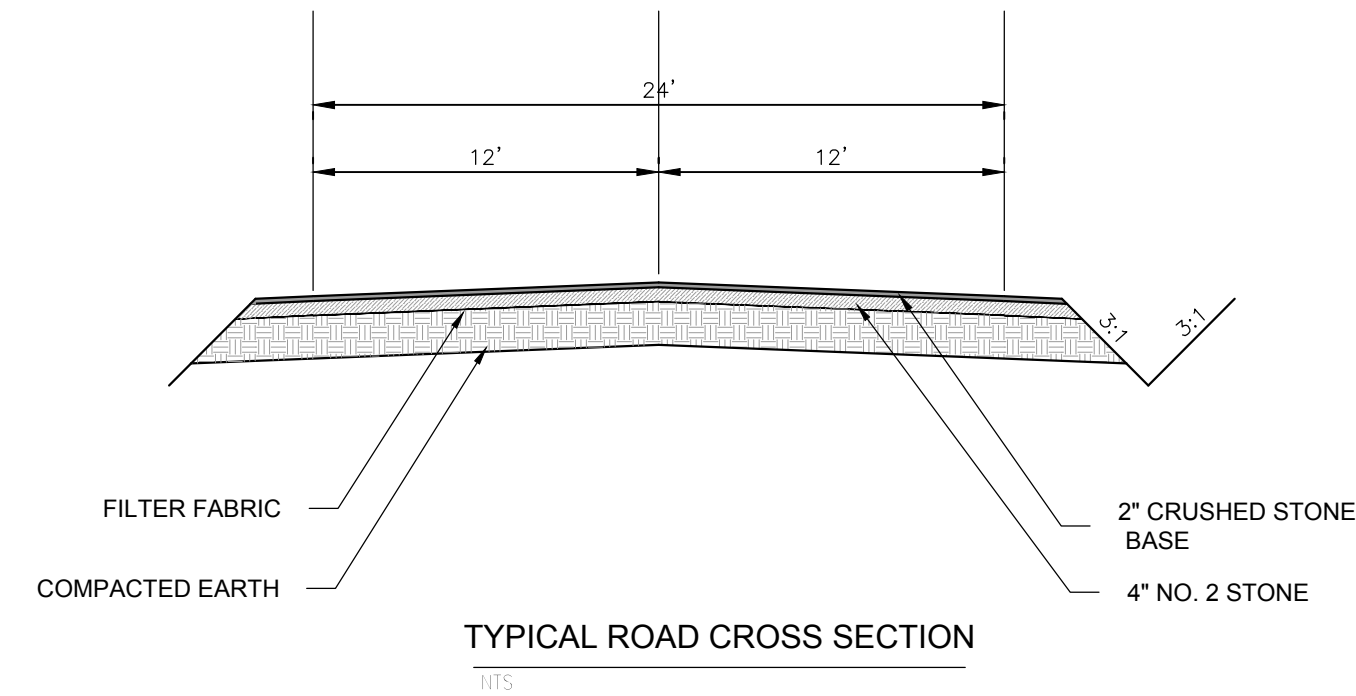
Phone: (859)223-5694  
Fax: (859)223-2607

SEPTEMBER 2018

SET NO. \_\_\_\_\_

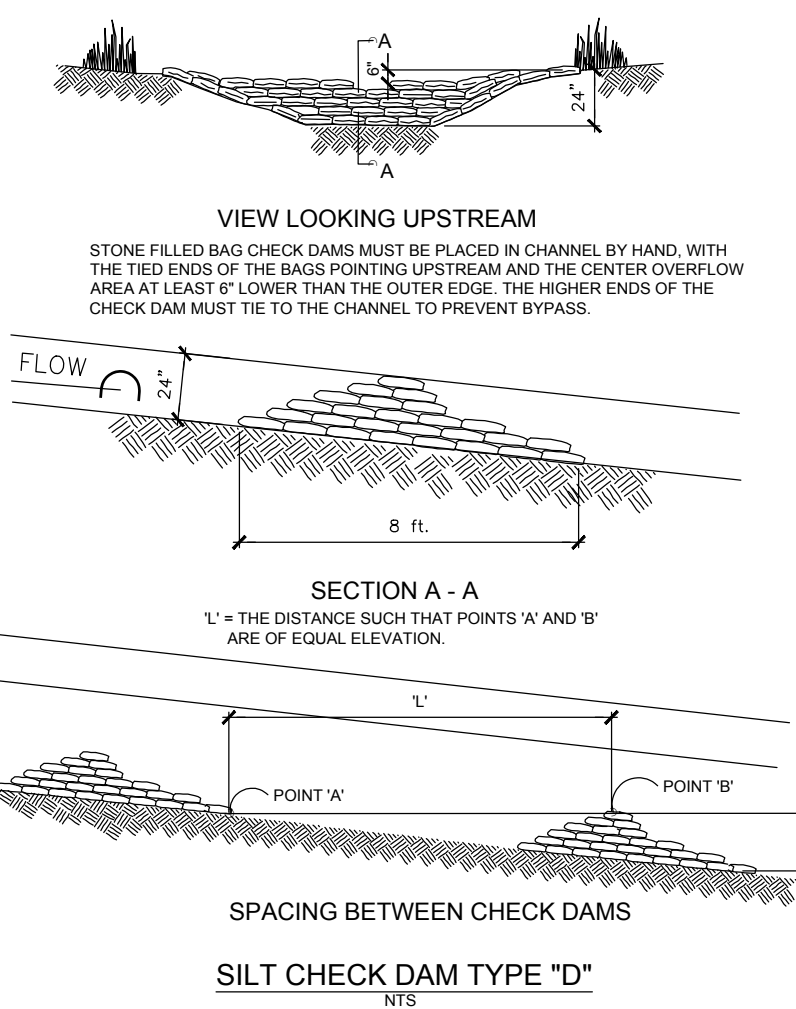
MSE PROJECT No. 9553-08



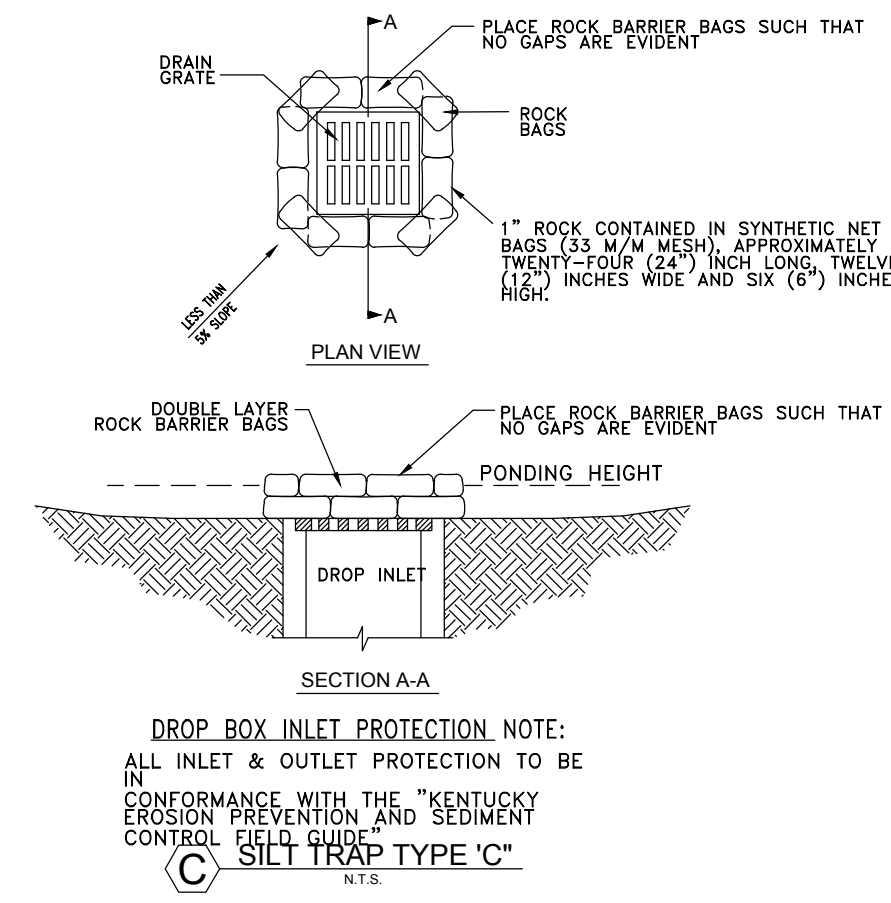


- NOTES
1. THE ENTRANCE SHALL BE MAINTAINED IN A CONDITION THAT WILL PREVENT TRACKING OR FLOWING OF SEDIMENT ONTO PUBLIC RIGHTS-OF-WAY. THIS MAY REQUIRE TOP DRESSING, REPAIR AND/OR CLEANOUT OF ANY MEASURES USED TO TRAP SEDIMENT.
  2. WHEN NECESSARY, WHEELS SHALL BE CLEANED PRIOR TO ENTRANCE ONTO PUBLIC RIGHT OF WAY.
  3. WHEN WASHING IS REQUIRED, IT SHALL BE DONE ON AN AREA STABILIZED WITH CRUSHED STONE THAT DRAINS INTO AN APPROVED SEDIMENT TRAP OR SEDIMENT BASIN.

TEMPORARY GRAVEL CONSTRUCTION ENTRANCE/EXIT  
N.T.S.



SILT CHECK DAM TYPE "D"  
N.T.S.



DROP BOX INLET PROTECTION NOTE:  
ALL INLET & OUTLET PROTECTION TO BE IN CONFORMANCE WITH THE "KENTUCKY EROSION PREVENTION AND SEDIMENT CONTROL FIELD GUIDE" SILT TRAP TYPE "C"  
N.T.S.

### GENERAL NOTES

CONTRACTOR SHALL LOCATE PROPERTY LINES, RIGHTS-OF-WAY AND UNDERGROUND UTILITIES. PROTECT UNDERGROUND UTILITIES.

CONTRACTOR SHALL NOTIFY ENGINEER OF ANY AREAS WHERE UNACCEPTABLE SOILS, SINKHOLES, WET AREAS OR OTHER CONDITIONS ARE ENCOUNTERED WHICH MAY ADVERSELY AFFECT THE SITE. IF DIRECTED BY ENGINEER, REMOVE UNSUITABLE SOILS AND REPLACE THEM WITH ACCEPTABLE SOILS.

EARTH AND ROCK WORK IS UNCLASSIFIED. NO EXTRA PAYMENT WILL BE MADE FOR ROCK EXCAVATION.

CONTRACTOR SHALL MAKE MINOR ADJUSTMENTS IN GRADING PLAN AS NECESSARY TO PROVIDE FOR SMOOTH TRANSITION FOR EXISTING ENTRANCES.

THE CONTRACTOR SHALL ESTABLISH EROSION CONTROL MEASURES BEFORE DISTURBING SITE.

THE CONTRACTOR MUST TAKE NECESSARY ACTION TO MINIMIZE TRACKING OF MUD ONTO PAVED ROADWAY FROM CONSTRUCTION AREAS. THE CONTRACTOR SHALL DAILY REMOVE MUD/SOIL FROM PAVEMENT, AS MAY BE REQUIRED.

THE CONTRACTOR MUST PROVIDE TRAFFIC CONTROL IN ACCORDANCE WITH THE MANUAL FOR UNIFORM TRAFFIC CONTROL DEVICES AND THE KENTUCKY DEPARTMENT OF HIGHWAYS GUIDANCE MANUAL.

THE CONTRACTOR MUST MAINTAIN ACCESS TO EXISTING BUSINESSES AND EXISTING ROADS.

ALL EARTHWORK TO COMPLY WITH KENTUCKY DEPT. OF HIGHWAYS (KY-DOH SECTION 400) SPECIFICATIONS FOR ROAD AND BRIDGE CONSTRUCTION, EDITION OF 2000 AND ANY AMENDMENTS.

### EROSION CONTROL NOTES:

THE EROSION CONTROL MEASURES NOTED BELOW ARE MINIMUMS AND DO NOT RELIEVE THE CONTRACTOR FROM THE RESPONSIBILITY FOR COMPLIANCE WITH ANY AND ALL U.S. EPA, KENTUCKY DIVISION OF WATER AND/OR LOCAL REQUIREMENTS.

CONTRACTOR SHALL ESTABLISH EROSION CONTROL MEASURES BEFORE DISTURBING SITE. EROSION CONTROL MEASURES MUST COMPLY WITH THE HENDERSON COUNTY EROSION PREVENTION AND SEDIMENTATION CONTROL REQUIREMENTS.

ALL EROSION CONTROL DEVICES SHALL BE PROPERLY MAINTAINED DURING ALL PHASES OF CONSTRUCTION UNTIL THE COMPLETION OF ALL CONSTRUCTION ACTIVITIES AND ALL DISTURBED AREAS HAVE BEEN STABILIZED.

ADDITIONAL CONTROL DEVICES MAY BE REQUIRED DURING CONSTRUCTION, IN ORDER TO CONTROL EROSION AND/OR OFFSITE SEDIMENTATION. ALL TEMPORARY CONTROL DEVICES SHALL BE REMOVED ONCE CONSTRUCTION IS COMPLETED AND THE SITE IS STABILIZED.

IT IS THE CONTRACTOR'S RESPONSIBILITY TO PREVENT EROSION ONTO ADJACENT PROPERTY. ANY REMEDIAL MEASURES REQUIRED TO CORRECT DAMAGE CREATED BY EROSION SHALL BE AT THE CONTRACTOR'S EXPENSE.

TOPSOIL STOCKPILES THAT ARE NOT BEING UTILIZED FOR A PERIOD OF 14 DAYS TO BE SURROUNDED BY SILT FENCE, RESEEDED AND PLACED WHERE SOIL EROSION WOULD GO TO THE SILT TRAPS.

SILT FENCES TO BE CLEANED OUT WHEN THEY BECOME ONE-THIRD FULL.

WHEN SEASONAL CONDITIONS PROHIBIT THE APPLICATION OF TEMPORARY OR PERMANENT SEEDING, NON-VEGETATIVE SOIL STABILIZATION PRACTICES SUCH AS MULCHING AND MATTING SHALL BE USED, UNTIL SUCH TIME AS CONDITIONS PERMIT.

ALL SEDIMENT CONTROL MEASURES SHALL BE INSPECTED AT LEAST ONCE EVERY SEVEN DAYS AND AFTER ANY STORM EVENT OF GREATER THAN 0.5 INCHES OF PRECIPITATION DURING ANY 24-HOUR PERIOD. A FIELD LOG OF INSPECTIONS SHALL BE MADE AND A COPY GIVEN TO THE OWNER.

ALL SEDIMENT CONTROL FEATURES SHALL BE MAINTAINED UNTIL FINAL SOIL STABILIZATION HAS BEEN OBTAINED.

STABILIZATION MEASURES SHALL BE INITIATED AS SOON AS PRACTICAL IN PORTIONS OF THE SITE WHERE CONSTRUCTION ACTIVITIES HAVE TEMPORARILY OR PERMANENTLY CEASED, BUT NO MORE THAN 14 DAYS AFTER THE CONSTRUCTION ACTIVITY IN THAT PART OF THE SITE HAS TEMPORARILY OR PERMANENTLY CEASED UNLESS THAT ACTIVITY IN THAT PORTION OF THE SITE WILL RESUME WITHIN 21 DAYS.

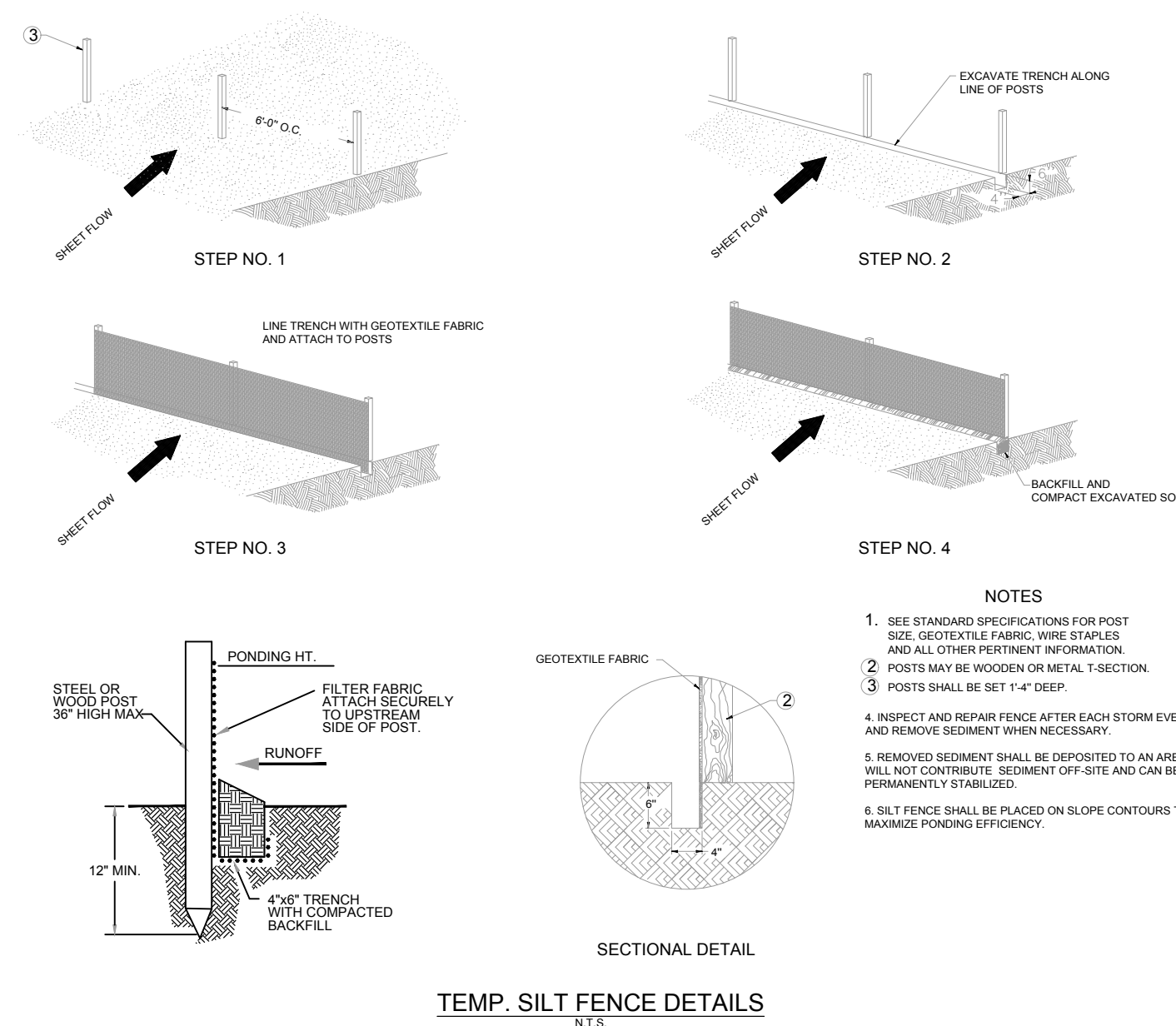
THE CONTRACTOR MUST TAKE NECESSARY ACTION TO MINIMIZE TRACKING OF MUD ONTO PAVED ROADWAY FROM CONSTRUCTION AREAS. THE CONTRACTOR SHALL DAILY REMOVE MUD/SOIL FROM PAVEMENT, AS MAY BE REQUIRED

PROVIDE TRAFFIC CONTROL IN ACCORDANCE WITH THE MANUAL FOR UNIFORM TRAFFIC CONTROL DEVICES AND THE KENTUCKY DEPARTMENT OF HIGHWAYS GUIDANCE MANUAL.

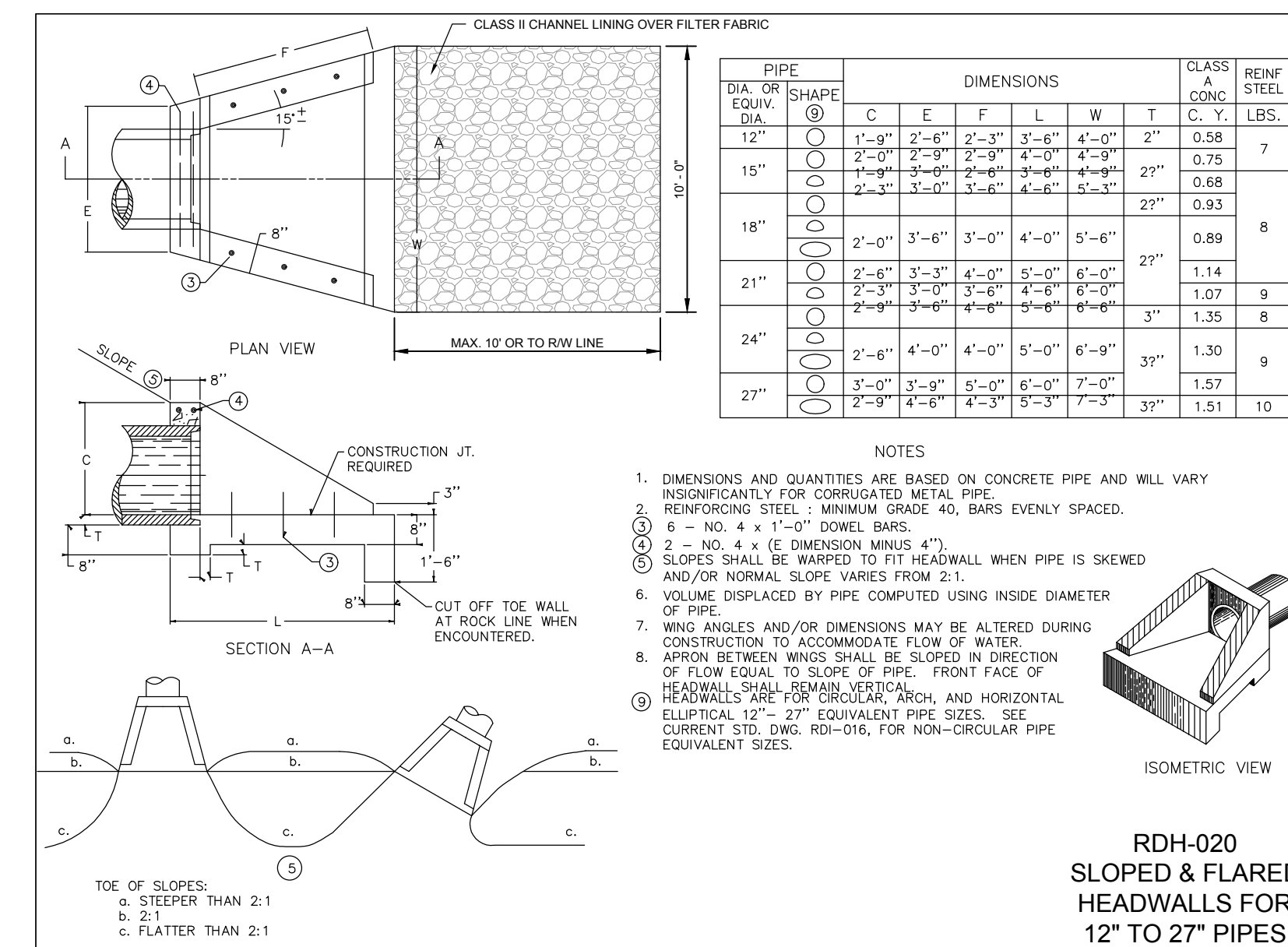
MAINTAIN ACCESS TO EXISTING BUSINESSES AND EXISTING ROADS.

ALL EARTHWORK TO COMPLY WITH KENTUCKY DEPT. OF HIGHWAYS (KY-DOH SECTION 400) SPECIFICATIONS FOR ROAD AND BRIDGE CONSTRUCTION, EDITION OF 2000 AND ANY AMENDMENTS.

THE CONTRACTOR SHALL LIMIT ACCESS TO THE SITE TO THE CONSTRUCTION ENTRANCES. THE LOCATION OF THE CONSTRUCTION ENTRANCES SHALL BE APPROVED BY THE ENGINEER AND DESIGNATED ON THE SWPPP. THE CONTRACTOR SHALL INSTALL STONE SURFACE AT THE LOCATION WHERE CONSTRUCTION TRAFFIC LEAVES AND ENTERS THE SITE. THESE ACCESS POINTS SHALL BE MIN. 20' WIDE, 50' LONG, 0.5' DEEP AND USE NO 7 STONE OVER GEOTEXTILE FABRIC. THE CONTRACTOR IS RESPONSIBLE FOR KEEPING STREETS AND PARKING AREAS FREE FROM MUD, DIRT, DEBRIS, AND ROCK. DUST SHALL BE KEPT TO A MINIMUM BY UTILIZING SPRINKLING, CALCIUM CHLORIDE, VEGETATIVE COVER, SPRAY ON ADHESIVES OR OTHER APPROVED METHODS. THIS ENTRANCE SHALL BE MAINTAINED UNTIL THE SITE PAD HAS BEEN CONSTRUCTED.

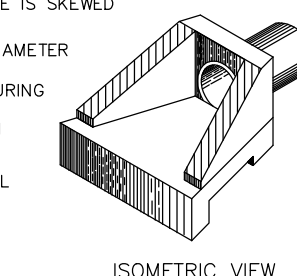


TEMP. SILT FENCE DETAILS  
N.T.S.



PIPE DIA. OR SHAPE EQUIV.	DIMENSIONS						CLASS A CONC. C. Y.	REIN. STEEL LBS.
	C	E	F	L	W	T		
12"	1'-4"	2'-4"	2'-3"	3'-4"	4'-0"	2"	0.58	7
15"	2'-0"	2'-9"	2'-9"	4'-0"	4'-9"	2 1/2"	0.68	7
	1'-9"	3'-0"	2'-6"	4'-0"	4'-9"	2 1/2"	0.93	
18"	2'-0"	3'-6"	3'-0"	4'-0"	5'-6"	2 1/2"	0.89	8
	2'-0"	3'-6"	3'-0"	4'-0"	6'-0"	3"	1.35	
21"	2'-6"	3'-3"	4'-0"	5'-0"	6'-0"	2 1/2"	1.14	9
	2'-3"	3'-0"	3'-6"	4'-6"	6'-0"	3"	1.07	
24"	2'-9"	3'-6"	4'-0"	5'-0"	6'-9"	3"	1.35	8
	2'-6"	4'-0"	4'-0"	5'-0"	6'-9"	3"	1.30	
27"	3'-0"	3'-9"	5'-0"	6'-0"	7'-0"	3"	1.57	9
	2'-9"	4'-6"	4'-3"	5'-3"	7'-3"	3 1/2"	1.51	

- NOTES
1. DIMENSIONS AND QUANTITIES ARE BASED ON CONCRETE PIPE AND WILL VARY INDEFINITELY FOR CORRUGATED METAL PIPE.
  2. REINFORCING STEEL: MINIMUM GRADE 40, BARS EVENLY SPACED.
  3. 6 - NO. 4 x 1'-0" DOWEL BARS.
  4. 2 - NO. 4 x (E DIMENSION MINUS 4")
  5. SLOPES SHALL BE WANTED TO FIT HEADWALL WHEN PIPE IS SKEWED AND/OR NORMAL SLOPE VARIES FROM 2:1.
  6. VOLUME DISPLACED BY PIPE COMPUTED USING INSIDE DIAMETER OF PIPE.
  7. WING ANGLES AND/OR DIMENSIONS MAY BE ALTERED DURING CONSTRUCTION TO ACCOMMODATE FLOW OF WATER.
  8. APRON BETWEEN WINGS SHALL BE SLOPED IN DIRECTION OF FLOW EQUAL TO SLOPE OF PIPE. FRONT FACE OF HEADWALL SHALL REMAIN VERTICAL.
  9. HEADWALLS ARE FOR CIRCULAR ARCH, AND HORIZONTAL ELLIPTICAL 12" - 27" EQUIVALENT PIPE SIZES. SEE CURRENT STD. DWG. RDI-016, FOR NON-CIRCULAR PIPE EQUIVALENT SIZES.



RDH-020 SLOPED & FLARED HEADWALLS FOR 12" TO 27" PIPES

EROSION CONTROL DETAILS  
LOT 12 SITE PREPARATION  
GREER INDUSTRIAL PARK  
LONDON-LAUREL COUNTY INDUSTRIAL DEVELOPMENT AUTHORITY  
LAUREL COUNTY, KENTUCKY

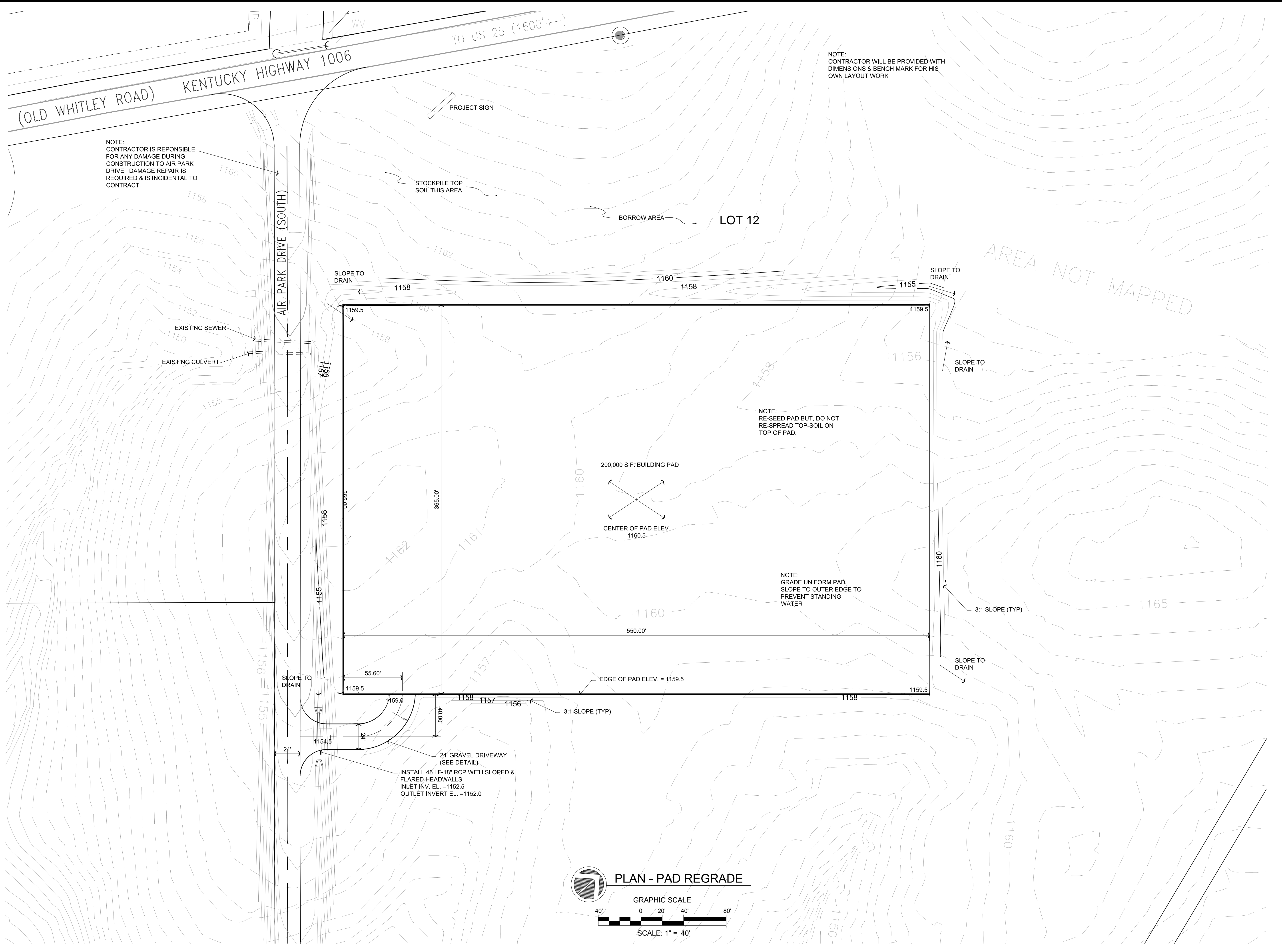
DATE	BY	REVISION
	J.D.W.	

PROJECT NO. 9553-08  
DESIGNED BY C.A.R.  
DRAWN BY MSE  
CHECKED BY C.A.R.  
DATE SEPTEMBER, 2018  
SCALE AS NOTED

Engineers  
Architects  
Planners  
**nse**  
OF KENTUCKY, INC.  
624 Wellington Way  
Lexington, KY 40503  
Phone: (859) 223-5694  
Fax: (859) 223-2607  
www.nsexinc.com

DRAWING NO.  
**C-3**  
SHEET OF

M:\arch\CV\Greer Industrial - Project\SPad Construction plans\Greer ind site plans\2000\_2013.dwg, 9/10/2018 3:04:20 PM, DWG to PDF, P3



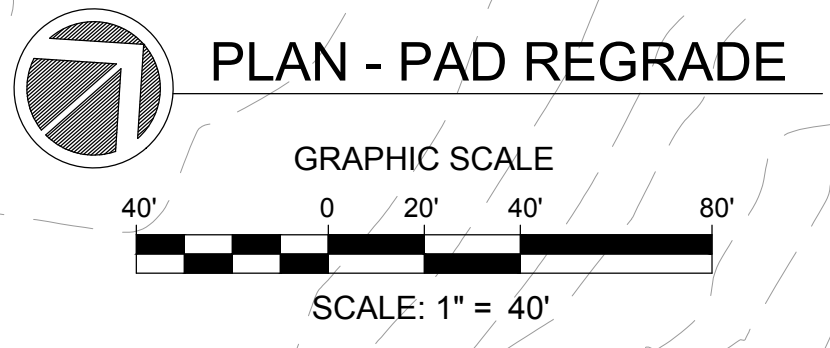
NOTE:  
CONTRACTOR IS RESPONSIBLE  
FOR ANY DAMAGE DURING  
CONSTRUCTION TO AIR PARK  
DRIVE. DAMAGE REPAIR IS  
REQUIRED & IS INCIDENTAL TO  
CONTRACT.

NOTE:  
CONTRACTOR WILL BE PROVIDED WITH  
DIMENSIONS & BENCH MARK FOR HIS  
OWN LAYOUT WORK

NOTE:  
RE-SEED PAD BUT, DO NOT  
RE-SPREAD TOP-SOIL ON  
TOP OF PAD.

NOTE:  
GRADE UNIFORM PAD  
SLOPE TO OUTER EDGE TO  
PREVENT STANDING  
WATER

INSTALL 45 LF.-18" RCP WITH SLOPED &  
FLARED HEADWALLS  
INLET INV. EL. = 1152.5  
OUTLET INVERT EL. = 1152.0



**GRADING PLAN**  
**LOT 12 SITE PREPARATION**  
GREER INDUSTRIAL PARK  
LONDON-LAUREL COUNTY INDUSTRIAL DEVELOPMENT AUTHORITY  
LAUREL COUNTY, KENTUCKY

DATE	REVISION	BY
		J.D.W.

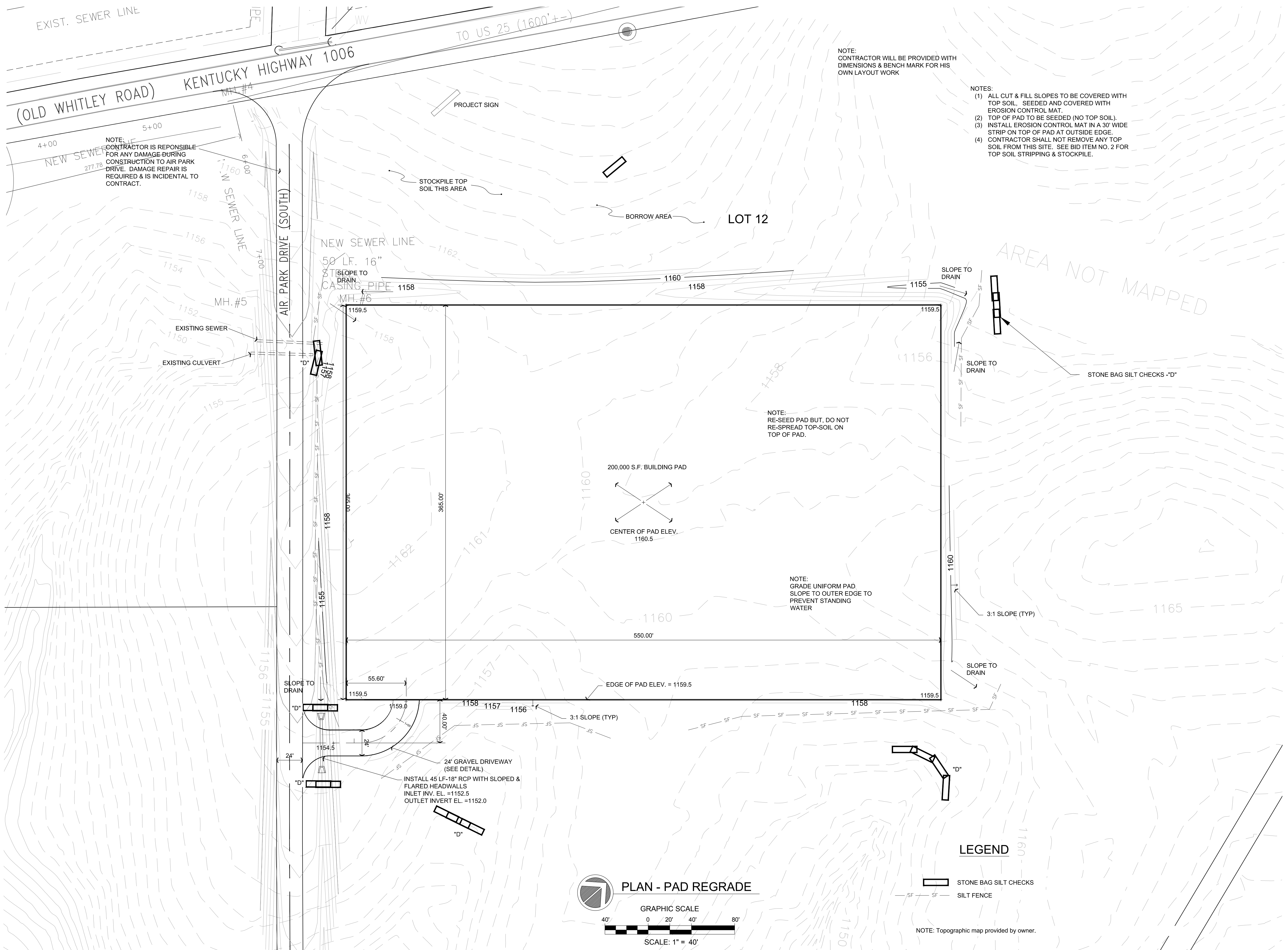
PROJECT NO.	9553-08
DESIGNED BY	G.A.R.
DRAWN BY	MSE
CHECKED BY	G.A.R.
REVIEWED BY	G.A.R.
DATE	SEPTEMBER, 2018
SCALE	AS NOTED

**nse**  
**OF KENTUCKY, INC.**  
Engineers  
Architects  
Planners  
624 Wellington Way  
Lexington, KY 40503  
www.nselex.com  
Phone: (659)223-5664  
Fax: (659)223-2607

DRAWING NO.  
**C-2**  
SHEET OF

AREA NOT MAPPED

M:\arch\QTV\Greer Industrial - Project\SPad Construction plans\Greer ind site plans\2000\_2013.dwg, 9/10/2018 3:06:47 PM, DWG to PDF, PLOT



NOTE:  
CONTRACTOR WILL BE PROVIDED WITH DIMENSIONS & BENCH MARK FOR HIS OWN LAYOUT WORK

- NOTES:
- (1) ALL CUT & FILL SLOPES TO BE COVERED WITH TOP SOIL, SEEDED AND COVERED WITH EROSION CONTROL MAT.
  - (2) TOP OF PAD TO BE SEEDED (NO TOP SOIL).
  - (3) INSTALL EROSION CONTROL MAT IN A 30' WIDE STRIP ON TOP OF PAD AT OUTSIDE EDGE.
  - (4) CONTRACTOR SHALL NOT REMOVE ANY TOP SOIL FROM THIS SITE. SEE BID ITEM NO. 2 FOR TOP SOIL STRIPPING & STOCKPILE.

NOTE:  
CONTRACTOR IS RESPONSIBLE FOR ANY DAMAGE DURING CONSTRUCTION TO AIR PARK DRIVE. DAMAGE REPAIR IS REQUIRED & IS INCIDENTAL TO CONTRACT.

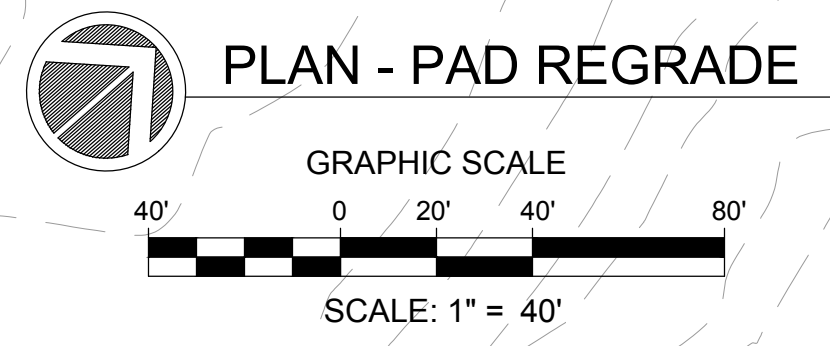
NOTE:  
RE-SEED PAD BUT, DO NOT RE-SPREAD TOP-SOIL ON TOP OF PAD.

NOTE:  
GRADE UNIFORM PAD SLOPE TO OUTER EDGE TO PREVENT STANDING WATER

**LEGEND**

- STONE BAG SILT CHECKS - "D"
- SILT FENCE

NOTE: Topographic map provided by owner.



**EROSION CONTROL**  
**LOT 12 SITE PREPARATION**  
GREER INDUSTRIAL PARK  
LONDON-LAUREL COUNTY INDUSTRIAL DEVELOPMENT AUTHORITY  
LAUREL COUNTY, KENTUCKY

DATE	REVISION	BY
		J.D.W.

PROJECT NO.	9553-08
DESIGNED BY	G.A.R.
DRAWN BY	MSE
CHECKED BY	G.A.R.
REVIEWED BY	G.A.R.
DATE	SEPTEMBER, 2018
SCALE	AS NOTED

**nse**  
**OF KENTUCKY, INC.**  
Engineers  
Architects  
Planners  
624 Wellington Way  
Lexington, KY 40503  
Phone: (859)223-5904  
Fax: (859)223-2807  
www.nsex.com

DRAWING NO.  
**C-1**  
SHEET OF